

YEAR 2022

CORE STATION 5035

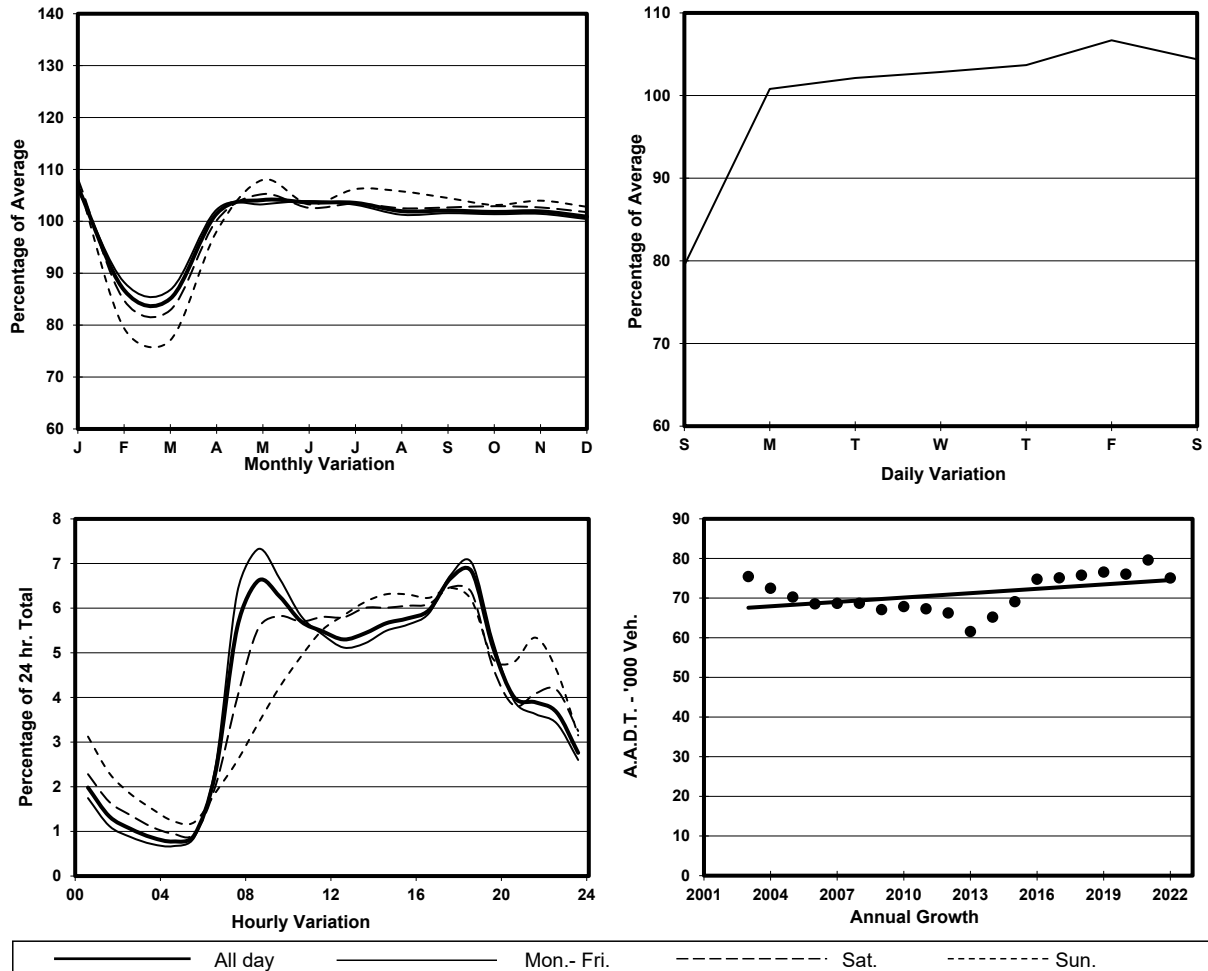
ROAD NETWORK MAJOR

ROAD TYPE EXPRESSWAY

LINK TUEN MUN RD (from CASTLE PEAK RD - TSUEN WAN to TSING LONG HIGHWAY - TING KAU BRIDGE)



1. TRAFFIC FLOW VARIATION AND GROWTH



2. TRAFFIC CHARACTERISTICS (BY DIRECTION)

Parameter	All - Day	Mon. - Fri.	Sat.	Sun.
EAST BOUND				
A.A.D.T.	37010	38830	38740	29080
R 12 / 24 - %	75.5	77.1	73.3	68.2
R 16 / 24 - %	88.3	89	87.1	84.7
AM Peak Hour	0800-0900	0800-0900	0900-1000	0900-1000
One-way flow at AM peak hour	3110	3630	2710	1480
T - % (AM)	-	-	-	-
PM Peak Hour	1700-1800	1700-1800	1700-1800	1700-1800
One-way flow at PM peak hour	2250	2370	2300	1780
T - % (PM)	-	-	-	-
Prop.of commercial vehicles - 16 hr.	-	-	-	-
WEST BOUND				
A.A.D.T.	38050	39510	40500	31240
R 12 / 24 - %	67.1	68.3	66.1	60.3
R 16 / 24 - %	87.6	88.8	85.8	82.9
AM Peak Hour	0900-1000	0800-0900	0900-1000	0900-1000
One-way flow at AM peak hour	1890	2110	1910	1070
T - % (AM)	-	-	-	-
PM Peak Hour	1800-1900	1800-1900	1700-1800	1700-1800
One-way flow at PM peak hour	2930	3180	2820	2120
T - % (PM)	-	-	-	-
Prop.of commercial vehicles - 16 hr.	-	-	-	-

3. OTHER INFORMATION AND COMMENT